

Electronic Navigation Essentials: Day Long Seminar

Presented by: Ken Gillstrom / Voyageur Sailing

Saturday February 5, 2022 0930-1630

Humber Bay Sailing Centre, Toronto

Course Fee \$100.00 + HST

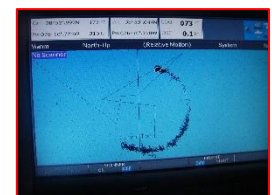
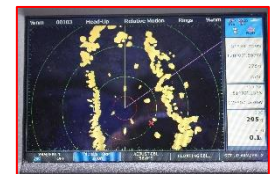
Register by contacting Erin at education@hbsailing.com

This course will guide you to develop an understanding of the most common electronic navigation tools and how to use them more effectively. You will also gain an understanding of the limitations of these electronic tools, enabling you to make navigational decisions that will enhance safety on your vessel.



Course Outline

- 0930 Welcome & Introductions**
Worksheet/Questionnaire - Navigating Techniques and Tools used on your vessel
Overview of the range of electronic tools available for Navigation and Collision Avoidance at sea.
Depth Sounder, Speed Log, GPS, Electronic Charts and Plotter, Radar, AIS, Autopilot
Which tools represents reality or the virtual world
Creating a safe environment – around your vessel
- 0945 The simple tools, rediscovered**
Understanding and utilizing the full potential of your depth sounder and speed log
- 1015 GPS Basics**
How it works and what information it can provide
Location, Speed Over Ground, Course Made Good
Comparing information to other instruments – Speed Log & Compass
Waypoints: Defining, Adding and Using.
Additional information that can be derived when using waypoints
- Velocity Made Good, Course to Steer, Estimated Time of Arrival, XTE
Limitations and Errors
- 1100 Electronic Charts**
Raster vs Vector
- 1115 Electronic Charting Systems: Chart Plotters – Combining GPS and Electronic Charts**
Features, Functions, Benefits and Cautions/Limitations
Location of equipment and set up
Entering Waypoints, Planning Routes, Tracking, Alarms
Multi-Function Displays
- 1145 When things go wrong!**
Issues with over reliance on using one navigational tool
Case scenarios of incidents relating to over reliance on electronics
- 1200 Lunch Break**
- 1300 Review of questionnaires**
- 1310 Radar -** How it works, type and location of equipment, limitations
Screen, Set Up, Range Rings, Understanding Relative Motion
Deciphering targets, Gain, Sea Clutter, Rain Clutter
Collision Avoidance – ARPA, EBL and Trails
Navigation – VRM and Racon features
Weather Tracking
- 1530 AIS -** Collision Avoidance
Communication assistance
AIS on the internet
- 1600 Autopilot** Equipment and Setup
Following a course/holding a point of sail
Go To Function
Power considerations and other limitations
- 1630 Wrap up**



BIO:
*Ken Gillstrom is a Sail Canada Advanced Cruising Instructor and RYA Yachtmaster Offshore. He has sailed over 100,000 miles, much of it with limited modern electronic tools. Ken and his wife, Carol set sail 9 years ago on their new custom designed and built aluminum sailboat, Voyageur 10.10. They sailed 70,000 miles on Voyageur, including 2 Atlantic crossings, transited the Panama Canal, and on to – Galapagos, Hawaii, BC and Alaska. After 3 years on northwest coast they sailed south to Mexico, then Panama, transiting the Canal again. They have made their way back north and are currently on the east coast of Canada.
A number of articles Ken has written on boat related topics have been published by Pacific Yachting magazine.
Ken and his wife, Carol, conduct sail training adventures on board Voyageur 10.10 as they sail the world*

Safety at Sea: Emergencies on Board (Day Long Seminar)

Presented by: Ken Gillstrom / Voyageur Sailing

Sunday February 6, 2022 0930 - 1630

Humber Bay Sailing Centre, Toronto

Course Fee \$115.00 + HST

Register by contacting Erin @ education@hbsailing.com

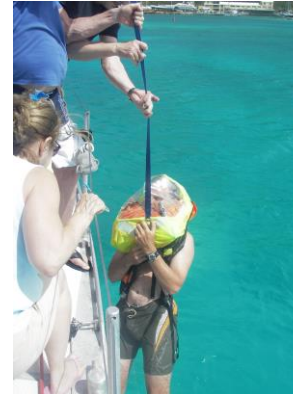


This is an essential course for anyone who spends time on the water, whether making an ocean passage or local cruising.

1. *Learn to expect the unexpected and do everything possible to PREVENT emergencies from ever happening.*
2. *Develop safety procedures on your vessel to be PREPARED for various emergencies.*
3. *Techniques on how to REACT to and MANAGE emergency situations (both physically and emotionally) if they occur on board.*

Course Outline

- 0930 Introductions and Overview - Pass out Course Binders and Emergencies Questionnaire
Scariest Moments / USCG Video
Expecting the Unexpected
Hierarchy of Emergencies
- 1000 **Reducing Anxiety & the Role of Fear**
Master's Responsibility
Risk Management
The Safety Management System – Creating a Safe Environment
- 1030 **Break** – Hand in Questionnaires
- 1045 Questionnaire Results and Discussion
Prevention
Six Categories to Reduce Risk of Incidents (Prevention)
Preparedness
Equipment/Training for Emergencies Situations including Evacuation
Including videos and demonstrations
Black Box Theory
- 1200 **Lunch**
Participants to read 3 Case Studies ready for Discussion
- 1300 **Reaction and Action**
When Things Go Wrong (Reaction)
Review Case Studies – Picton Castle, Ouzo and Panacea
The BRAIN – Controlling reactions, Vicarious Reinforcement
S.A.D. Principle
Fight or Flight?
- 1345 **Managing Emergency Situations (Action)**
Preparing yourself to deal with Emergencies
Review of most all emergency situations and action to take
Fire/Flooding/Medical/COB/Navigational/Mechanical/Weather
- 1430 **Break** – Complete exercise #4 in Workbook
- 1445 **Managing Emergency Situations – continued**
Abandoning Ship
When/Preparations/Ditch Bag/Task Assignment
Survival/Life Raft/Helicopter
- 1630 **Review take home exercise and Q&A**



All participants receive a COURSE BINDER that includes NOTES for the day, CASE STUDIES, and copies of DOCUMENTS that will help set up a safety management system on board your vessels.

There is also EMERGENCY EXERCISES to execute, that will help improve awareness of conditions on board your own vessels.

Passage Making – Seminar Outline (Two Day Seminar)

Presented by: Ken and Carol Gillstrom / Voyageur Sailing

Saturday March 5 & Sunday March 6, 2022

Humber Bay Sailing Centre, Toronto

Course Fee \$195. + HST

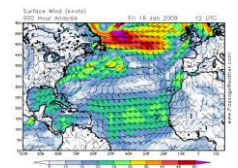
Register: Contact Erin at education@hbsailing.com

Course Modules Include:

- 1. Introductions: The psychology of passage making**
- 2. Vessel Design**
Advantages and disadvantages of various hull shapes, deck layouts, sail plans, monohull/catamaran, power/sail, interior layout, crew comfort above and below deck
- 3. Equipment**
Navigation: Electronic, Paper, Sextant
Communications: Sat phone, SSB, VHF, InReach
Steering: Hand steering, Autopilot, Steering Vane
Sail Plan and Rig: Depowering, Preventers, Poles
Auxiliary Power, Engines and Tankage, Range under power
Safety and Survival
- 4. Weather Basics**
Air Movement, Global Patterns, Highs and Lows, Clouds, Weather Patterns and Forecasting
- 5. Sail Dynamics**
How the wind drives the boat, Force of Wind, Boat Balance, Sail Trim and why
- 6. Passage Planning**
Factors to consider when devising the plan:
Vessel: Speed, Water and Fuel Capacities, Storage, Refrigeration,
Crew: Experience, Physical and Mental Limitations
Weather and how it will relate to vessel design and crew abilities
And Time of year, Prevailing winds

Navigation
Destinations and alternates
Clearances, Special Documentation, Restrictions, Formalities, Agents
Routes, Waypoints and hazards
Tide and Current considerations
Resources

Developing the plan – Putting it all together
- 7. Passage Preparation**
Getting Ready to Go
Vessel: Inspections, Repairs, Set up
Crew: Safety Briefing, Watch Schedules, Meal Preparation
Weather: Timing/Weather Window, Forecasts
- 8. Executing the Plan**
Setting Off
Keeping the boat moving -Light Air and Heavy Weather Tactics
Weather Tracking while underway
Health , Safety and Fitness while underway
Making Landfall – Relief vs Stress, Anchoring, Docking
- 9. Passage Examples:** Ken and Carol share real life experiences of Planning, Preparing and Executing a number of Passages
- 10. Q&A Sessions** with Ken and Carol at both Lunch hours and at the end of each day
Get answers that relate to your individual situations and needs



Ken and Carol Gillstrom have prepared for and executed hundreds of successful passages over the past 25 years, ranging from short day passages to passages of 4800 miles taking 34 days. Every passage brings different challenges. Even the same passage at a different time of year will present new challenges. Ken will prepare you to execute your own successful passages to any part of the world, based on individual requirements and circumstances.